

2/2 WAY LATCHING SOLENOID VALVE (PILOT OPERATED), G 1/4" ÷ G 1/2"

COMMON FEATURES

Media: water, oil, air

Ambient temperature: -10°C ÷ +50°C

Body material: brass (CW617N EN 12165)

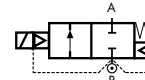
Operator material: stainless steel tube, brass plunger

Protection class: IP 65 (with connector and gasket)

NOTES

Special operator with reduced stroke for low power coils

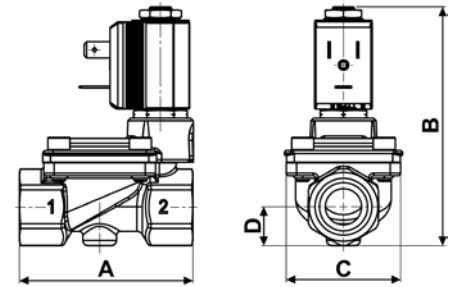
TYPE: LC203+LC205



Normally Closed



DIMENSIONS & WEIGHTS		LC203	LC204	LC205
G connection	[ISO 228]	1/4"	3/8"	1/2"
A	[mm]	67	67	67
B	[mm]	90	90	90
C	[mm]	45.6	45.6	45.6
D	[mm]	15	15	15
weight	[kg]	0.4	0.4	0.4



Flow direction overseat 1 → 2

VALVE	nominal Ø	flow rate Kvs	min.	OPD		COILS	
				max. AC	max. DC	low power only	
code	[mm]	[l/min]	[barg]	[barg]	[barg]	code	[Volts/Hz]
LC203DBZ	13	26	0.3	—	5	20Q0	6v DC
LC204DBZ	13	55	0.3	—	5	21Q0	12v DC
LC205DBZ	13	63	0.3	—	5	22Q0	24v DC

LC203 ÷ LC205 - NBR seal -

Media temperature: -10°C ÷ +90°C

Operator seal and diaphragm material: NBR

Coil power: DC 3w

Absorption (20°C): 500mA for **20Q0**
250mA for **21Q0**
125mA for **22Q0**

GENERAL PURPOSE

VALVE	nominal Ø	flow rate Kvs	min.	OPD		COILS	
				max. AC	max. DC	low power only	
code	[mm]	[l/min]	[barg]	[barg]	[barg]	code	[Volts/Hz]
LC203DVZ	13	26	0.3	—	5	20Q0	6v DC
LC204DVZ	13	55	0.3	—	5	21Q0	12v DC
LC205DVZ	13	63	0.3	—	5	22Q0	24v DC

LC203 ÷ LC205 - FKM seal -

Media temperature: -10°C ÷ +130°C

Operator seal and diaphragm material: FKM

Coil power: DC 3w

Absorption (20°C): 500mA for **20Q0**
250mA for **21Q0**
125mA for **22Q0**

GENERAL PURPOSE

VALVE	nominal Ø	flow rate Kvs	min.	OPD		COILS	
				max. AC	max. DC	low power only	
code	[mm]	[l/min]	[barg]	[barg]	[barg]	code	[Volts/Hz]
LC203DEZ	13	26	0.3	—	5	20Q0	6v DC
LC204DEZ	13	55	0.3	—	5	21Q0	12v DC
LC205DEZ	13	63	0.3	—	5	22Q0	24v DC

LC203 ÷ LC205 - EPDM seal -

Media temperature: -10°C ÷ +120°C

Operator seal and diaphragm material: EPDM

Coil power: DC 3w

Absorption (20°C): 500mA for **20Q0**
250mA for **21Q0**
125mA for **22Q0**

GENERAL PURPOSE