

2/2 WAY PILOT OPERATED VALVE WITH ASSISTED LIFT, G 1/4" ÷ G 1/2"

COMMON FEATURES

Media: water, oil, air

Media temperature: -10°C ÷ +130°C

Ambient temperature: -10°C ÷ +50°C

Body material: brass (CW617N EN 12165)

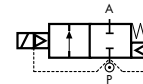
Operator material: stainless steel

Operator seal material: FKM

Main seal and diaphragm material: FKM

Protection class: IP 65 (with connector and gasket)

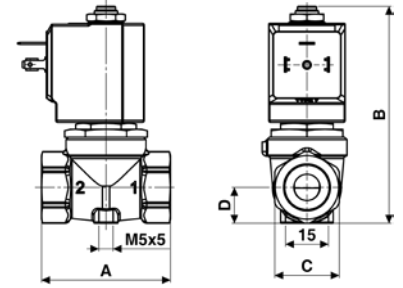
TYPE: D884/885/886



Normally Closed



| DIMENSIONS & WEIGHTS | | D884 | D885 | D886 |
|----------------------|-----------|--------|--------|--------|
| G connection | [ISO 228] | 1/4" | 3/8" | 1/2" |
| A | [mm] | 54 | 54 | 54 |
| B | [mm] | 89 | 89 | 89 |
| C | [mm] | HEX 27 | HEX 27 | HEX 27 |
| D | [mm] | 15 | 15 | 15 |
| weight | [kg] | 0.45 | 0.4 | 0.4 |



Flow direction overseat 1 → 2

| VALVE | nominal Ø | flow rate Kvs | OPD | | | COILS | |
|----------------|-----------|---------------|--------|---------|---------|-------|-----------------------|
| | | | min. | max. AC | max. DC | code | [Volts/Hz] |
| code | [mm] | [l/min] | [barg] | [barg] | [barg] | code | [Volts/Hz] |
| D884DVU | 10.5 | 21 | 0 | 16 | 6 | 7250 | 24v DC |
| D885DVU | 10.5 | 24 | 0 | 16 | 6 | 7200 | 24v 50/60Hz |
| D886DVU | 10.5 | 25 | 0 | 16 | 6 | 7400 | 110v 50Hz - 120v 60Hz |
| | | | | | | 7600 | 200v 50Hz - 220v 60Hz |
| | | | | | | 7700 | 230v 50Hz - 240v 60Hz |

D884/885/886 - FKM seal, NC -

Coil power: AC 18vA (holding)
AC 36vA (inrush)
DC 14w

GENERAL PURPOSE

