

## 2/2 WAY DIRECT ACTING SOLENOID VALVE, G 1/8"

### COMMON FEATURES

Media: water, oil, air

Media temperature:  $-10^{\circ}\text{C} \div +130^{\circ}\text{C}$

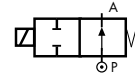
Ambient temperature:  $-10^{\circ}\text{C} \div +50^{\circ}\text{C}$

Body material: brass (CW617N EN 12165)

Operator material: stainless steel

Protection class: IP 65 (with connector and gasket)

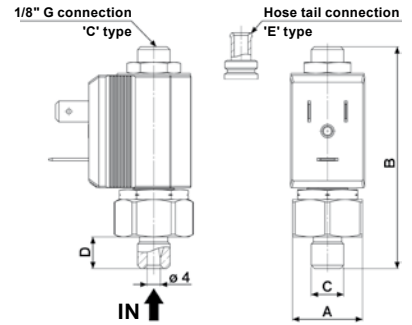
### TYPE: RB214



Normally Open



DIMENSIONS & WEIGHTS		RB214
<b>G connection</b>	[ISO 228]	1/8"
<b>A</b>	[mm]	21
<b>B</b>	[mm]	66.5
<b>C</b>	[mm]	1/8"
<b>D</b>	[mm]	9.5
<b>weight</b>	[kg]	0.06



VALVE	nominal $\varnothing$	flow rate Kvs	OPD			COILS	
			min.	max. Ac	max. Dc	code	[Volts/Hz]
code	[mm]	[l/min]	[barg]	[barg]	[barg]	code	[Volts/Hz]
<b>RB214CVD</b>	1.7	1.2	0	14	14	2250	24v DC
						2200	24v 50/60Hz
						2400	110v 50Hz - 120v 60Hz
						2600	200v 50Hz - 220v 60Hz
						2700	230v 50Hz - 240v 60Hz

### RB214 - FKM seal, NO -

Seal material: foodgrade FKM

Coil power: AC 10v<sub>A</sub> (holding)

AC 16v<sub>A</sub> (inrush)

DC 7w

### OPTIONS

Armature tube with hose tail  $\varnothing$  6 mm (e.g. code RB214EVD)

EPDM seal, temperature max. 120°C (e.g. code RB214CED)

